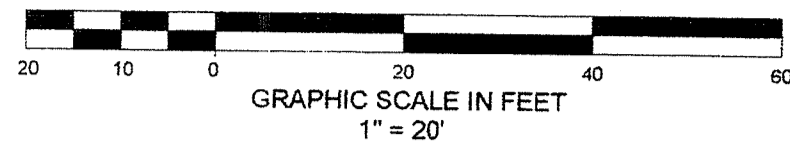
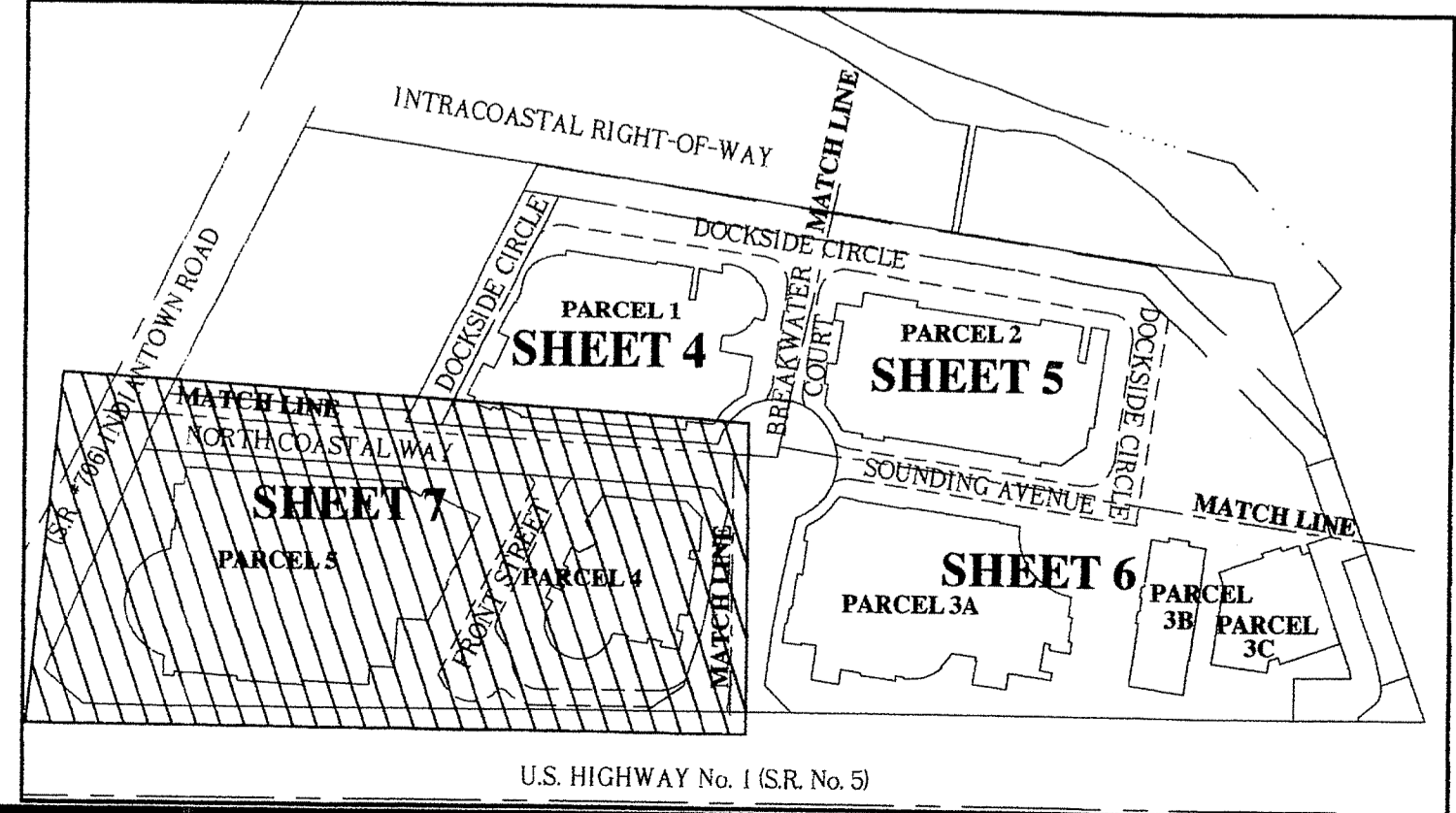
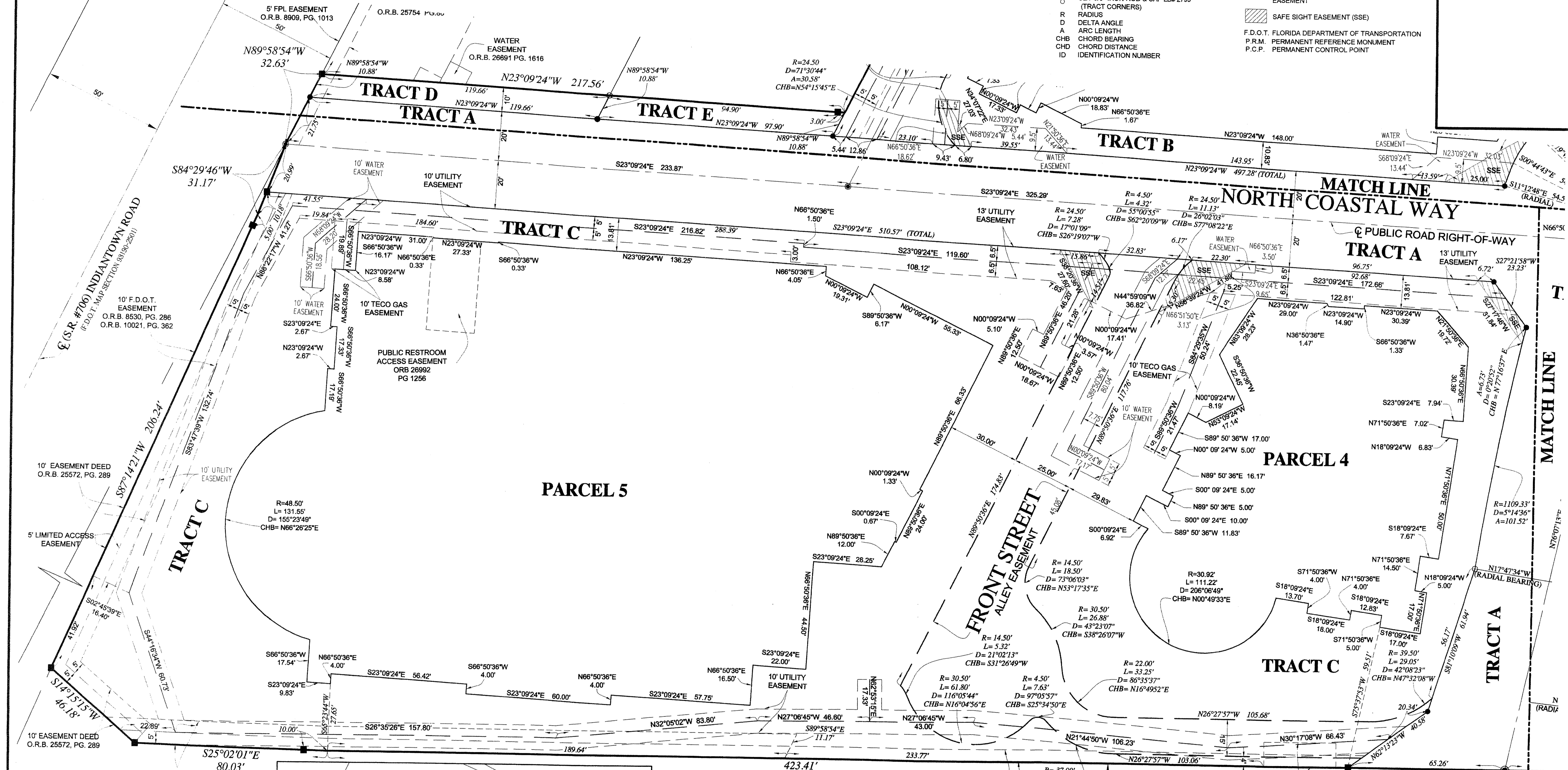


HARBOURSIDE, P.U.D.

LYING IN SECTION 6, TOWNSHIP 41 SOUTH, RANGE 43 EAST,
TOWN OF JUPITER, PALM BEACH COUNTY, FLORIDA
SEPTEMBER, 2014



LEGEND			
□	SET 4"x4" CONCRETE MONUMENT (P.C.P.)	TWP	TOWNSHIP
■	SET 4"x4" CONCRETE MONUMENT (P.R.M.)	RNG	RANGE
●	SET MAG NAIL & DISC (P.C.P.)	O.R.B.	OFFICIAL RECORD BOOK
○	SET MAG NAIL & DISC LB# 2799 (TRACT CORNERS)	C	CENTERLINE
○	SET 5/8" IRON ROD & CAP LB# 2799 (TRACT CORNERS)	PG	PAGE
R	RADIUS	S.R.	STATE ROAD
D	DELTA ANGLE		TRANSIENT DOCK EASEMENT & PERPETUAL PEDESTRIAN ACCESS EASEMENT
A	ARC LENGTH		SAFE SIGHT EASEMENT (SSE)
CHB	CHORD BEARING	F.D.O.T.	FLORIDA DEPARTMENT OF TRANSPORTATION
CHD	CHORD DISTANCE	P.R.M.	PERMANENT REFERENCE MONUMENT
ID	IDENTIFICATION NUMBER	P.C.P.	PERMANENT CONTROL POINT



U.S. HIGHWAY No. 1 (S.R. No. 5)
(ROAD PLAT BOOK 2, PGS 105 TO 118)
(F.D.O.T. MAP SECTION 93190-2512)

SHEET 7 OF 7
DAILEY AND ASSOCIATES, INC.
Surveying and Mapping
112 N. U.S. Highway No. 1
Tequesta, FL 33469
Phone: (561) 746-8424
BUSINESS LICENSE: LB# 2799